

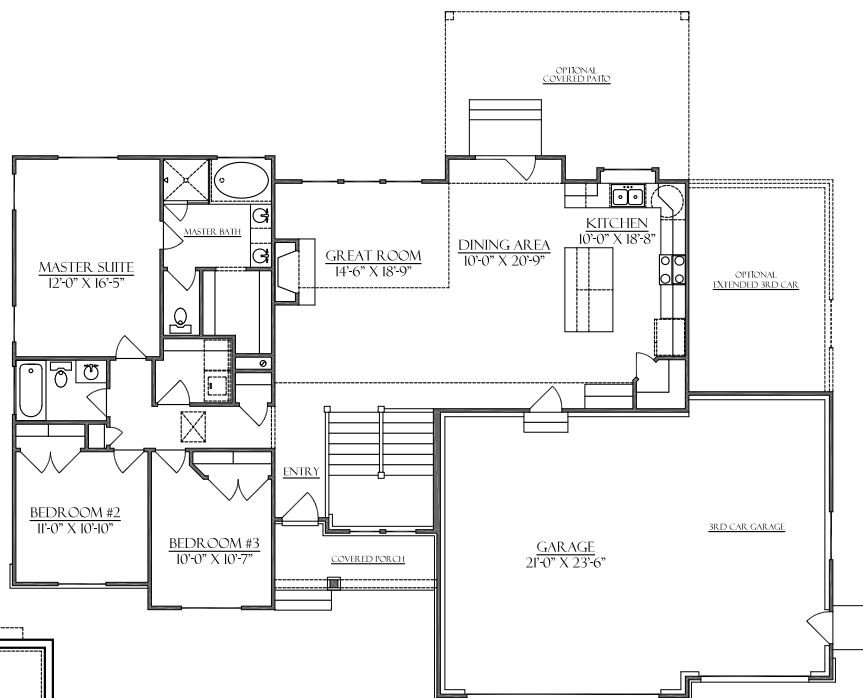
# EAGLE POINT HOMES



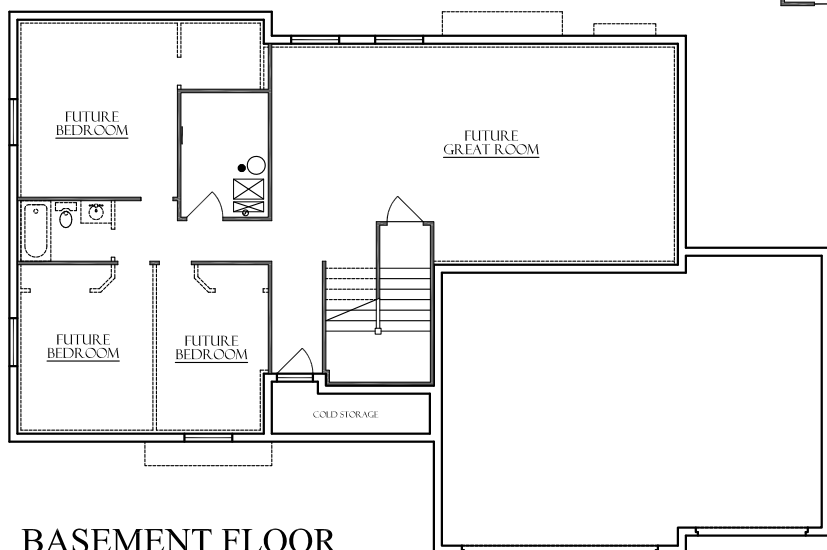
## WASHINGTON PLAN RAMBLER

3 BEDS / 2 BATHS

MAIN FLOOR	UNFINISHED	TOTAL
1628	1664	3292
WIDTH	DEPTH	
68'-4 1/2"	45'-2"	



**MAIN FLOOR**



**BASEMENT FLOOR**

COPYRIGHT © 2023 EAGLE POINT HOMES. ALL RIGHTS RESERVED. THE USE OF THESE PLANS IS EXPRESSLY LIMITED TO EAGLE POINT HOMES.

RE-USE, REPRODUCTION, OR PUBLICATION BY ANY METHOD, IN WHOLE OR IN PART, IS PROHIBITED.

NOTE: FLOOR PLANS MAY BE SHOWN WITH UPGRADED OPTIONS AND ARE SUBJECT TO CHANGE AS NECESSARY. SQUARE FOOTAGE IS ESTIMATED ONLY AND MAY VARY IN ACTUAL CONSTRUCTION. PRICING, LAYOUTS AND FEATURES SUBJECT TO CHANGE AT ANY TIME WITHOUT NOTICE

[www.eaglepointhomes.com](http://www.eaglepointhomes.com)

-

801-896-9973